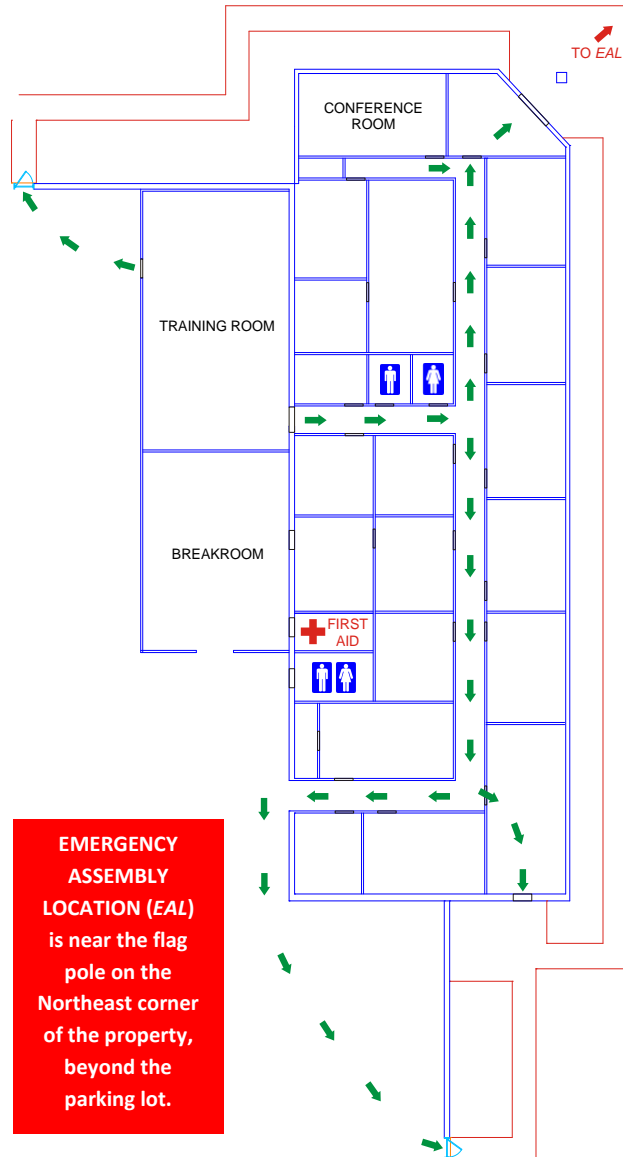




Developmental Industries, Inc.

Office Area Evacuation Plan

VISITORS ARE NOT ALLOWED ON THE PLANT FLOOR,
RESTRICTED AREAS OR SHIPPING/RECEIVING
WITHOUT AN ESCORT

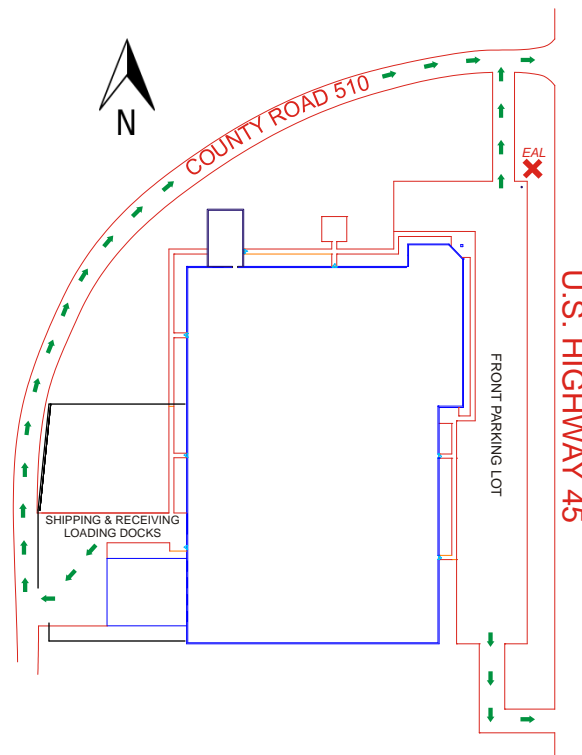


EMERGENCY ASSEMBLY LOCATION (EAL) is near the flag pole on the Northeast corner of the property, beyond the parking lot.



Developmental Industries, Inc.

Facility Road Egress Routes



915 Highway 45
Corinth, MS 38834
1-888-343-0456
Office: (662) 287-6626
Fax: (662) 287-6744
www.dimetalworks.com



Developmental Industries, Inc.

- CORINTH, MS -

VISITOR'S GUIDE



DON'T FORGET YOUR PPE!

Safety Glasses, Closed Toe Shoes and Long Pants are required while you are in this facility!



**HEARING PROTECTION IS
AVAILABLE, BUT NOT
REQUIRED**

VISITOR POLICY

Developmental Industries, Inc. (DI) is committed to the safety and well being of our employees, contractors, vendors, visitors, builders, and our community. All who enter this facility, excluding the employees of DI, must abide by this document. Anyone failing to agree to or abide by these terms may not enter the facility or after entry, may be asked to leave the facility. By entering the facility after receiving this Visitor's Guide, you are agreeing to abide by the following terms.

GENERAL RULES

Visitors and builders may enter the facility only upon receiving specific permission from DI management. Proceed only to your intended area and do not enter other areas of the facility. Visitors should have an employee escort at all times when in or near a work area. Access to work areas without required personal protective equipment (PPE) is prohibited. At a minimum you should wear: Safety glasses, long pants and closed toe shoes while in a work area. Hearing protection is available, but not required. Adhere to entryway signs that specify additional required PPE. The following items are not allowed on this property: guns, explosives, illegal drugs, alcohol, hazardous materials, radioactive materials, cameras, and recording devices.

EMERGENCY PROCEDURES

Reporting Emergencies: In case of a fire, explosion, release or other emergency, please inform your escort or the nearest DI employee as quickly as possible.

Emergency Signal: Adhere to all emergency loudspeaker announcements or signals and follow the instructions of your escort and other responsible employees.

Emergency Evacuation: All unescorted DI visitors, builders, and contractors are to report to the northeast corner of the property (near the flagpole) and proceed to the Emergency Assembly Location (EAL) just beyond the parking lot. Once you have received safety clearance from an authorized DI employee, all visitors, builders, contractors, and escorts will report back to the main entrance and check back in. If you become separated from your escort, follow the nearest DI employee to the above mentioned gathering place and communicate your situation to the individual in charge of that location.

Medical Assistance: Inform your escort or the nearest DI employee if there is a need for medical assistance. Employees will be able to direct medical assistance to you in the fastest manner possible.

REQUIRED PRACTICES

Stay with your escort at all times and use extreme caution around operating equipment and moving vehicles. Report all accidents and near misses to your escort or an authorized DI employee. All chemical spills must be reported to your escort or the nearest DI employee. Spills from transport vehicles are the transporter's responsibility, subject to our DI oversight. Spills of hazardous materials whether on or off site must be reported to an authorized DI employee. No tanks may be brought on site without prior permission. Non-hazardous solid waste must be disposed of in designated on site containers. Hazardous waste generated on site must be immediately reported for proper disposal. All persons must comply with posted information signs including smoking in designated areas, do not enter, speed limits, traffic signals, and road signs. Fork trucks, personnel vehicles and heavy equipment always have the right of way.

RELEASE OF LIABILITY AND TRADE SECRETS

All persons, in desiring to access the premises of DI, realize that the manufacturing processes are or may be in continuous operation and that there is an exposure to the danger of property harm, bodily injury, or death. All persons assume all risks of property damage and personal injury which they may receive as a result of being on the premises and agree that they will not for their self, the heirs or assigns, make any claim against DI, its agents or its employees, for any such damage or injury. All persons acknowledge their full understanding that the manufacturing processes, methods of manufacture, plant layout and machine design are trade secrets of DI and agree not to be communicated in any form to other individuals or companies. All persons agree that they will not use, communicate, copy, photograph or in any other way divulge any information relating to the trade secrets of DI, including its manufacturing processes, methods of manufacture, plant layout or machine design.